









Tower- 4
17th floor
J Flat



Tower-4
16th floor
Club house



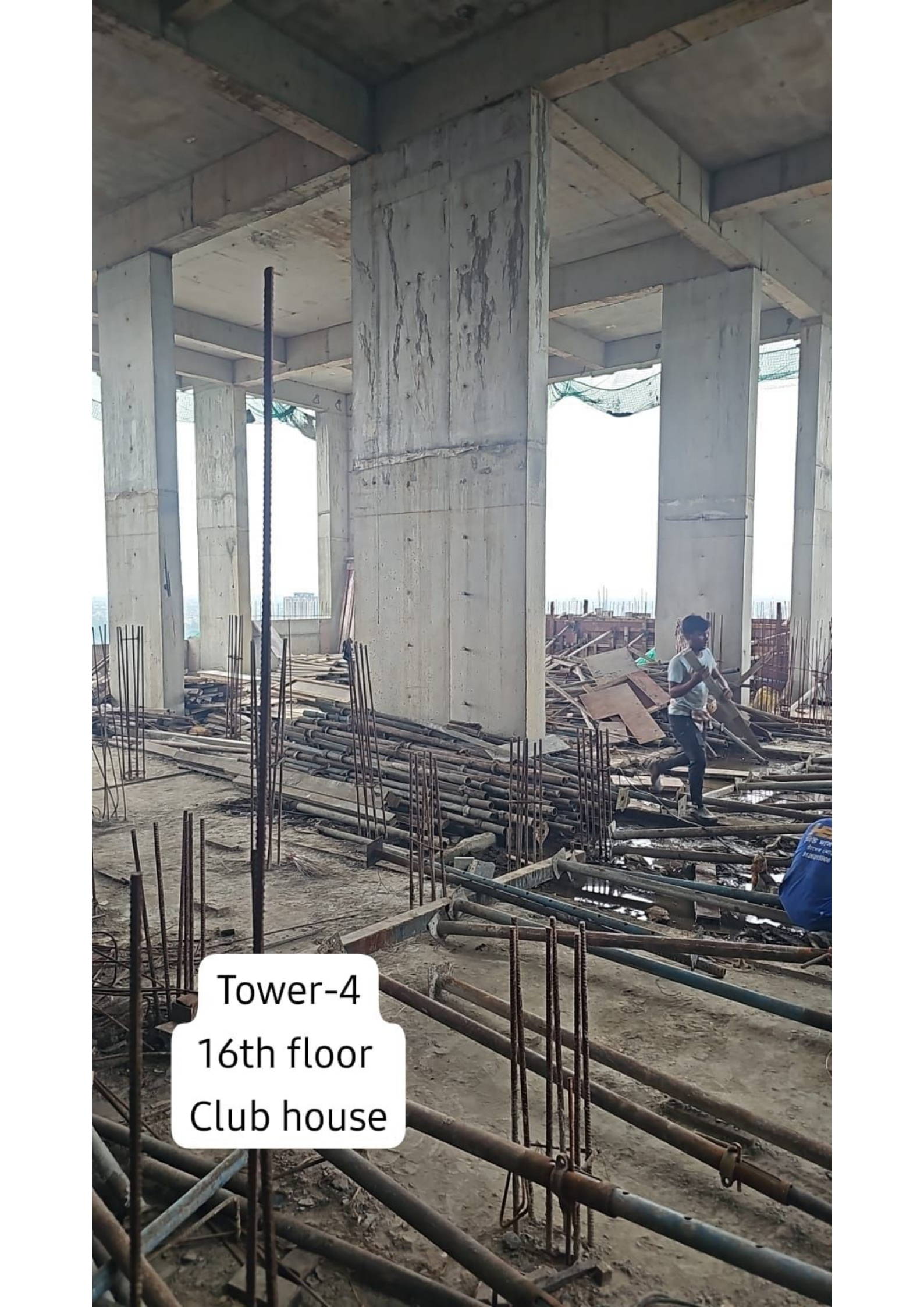
Tower- 4
17th floor
K Flat



Tower-4
15th floor
J flat



Tower-4
15th floor
K flat

A photograph of a construction site on the 16th floor of Tower-4, specifically for a Club house. The image shows a large, open space with several tall, rectangular concrete columns. The floor is cluttered with construction materials, including stacks of rebar, wooden formwork, and other debris. A worker in a white shirt and dark pants is visible in the background, walking through the debris. The concrete columns have a rough, weathered appearance. The overall scene is one of active construction.


Tower-4
16th floor
Club house



Tower-4
14th Floor
K flat



Tower-4
13th Floor
J flat



Tower-4
14th floor
J flat



Tower-4
12th Floor
J flat



Tower-4
13th Floor
K flat



Tower-4
11th Floor
J flat



Tower-4
11th Floor
K flat



Tower-4
12th Floor
K flat



Tower-4
10th Floor
K flat



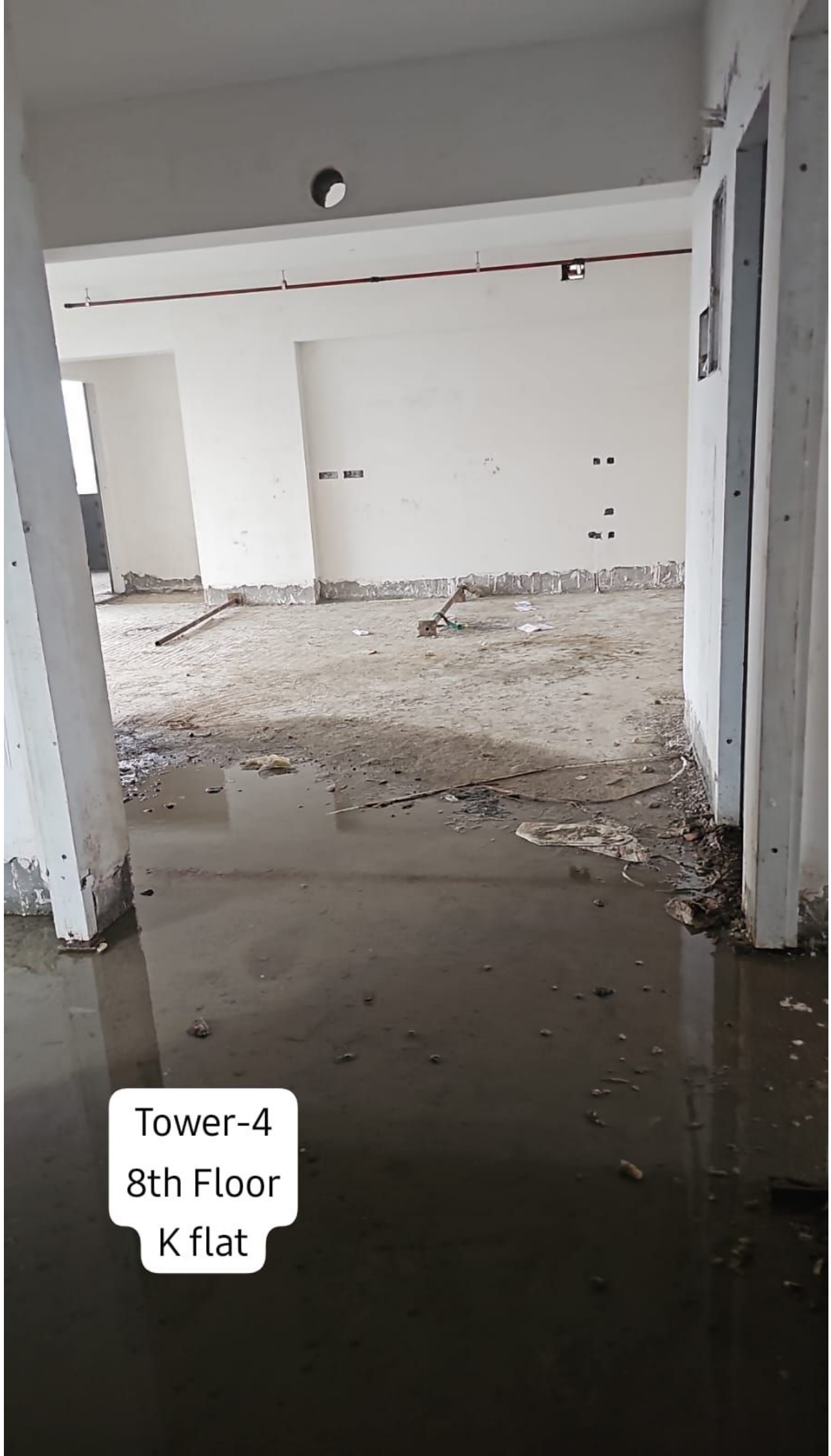
Tower-4
9th Floor
J flat



Tower-4
10th Floor
J flat



Tower-4
8th Floor
J flat



Tower-4
8th Floor
K flat



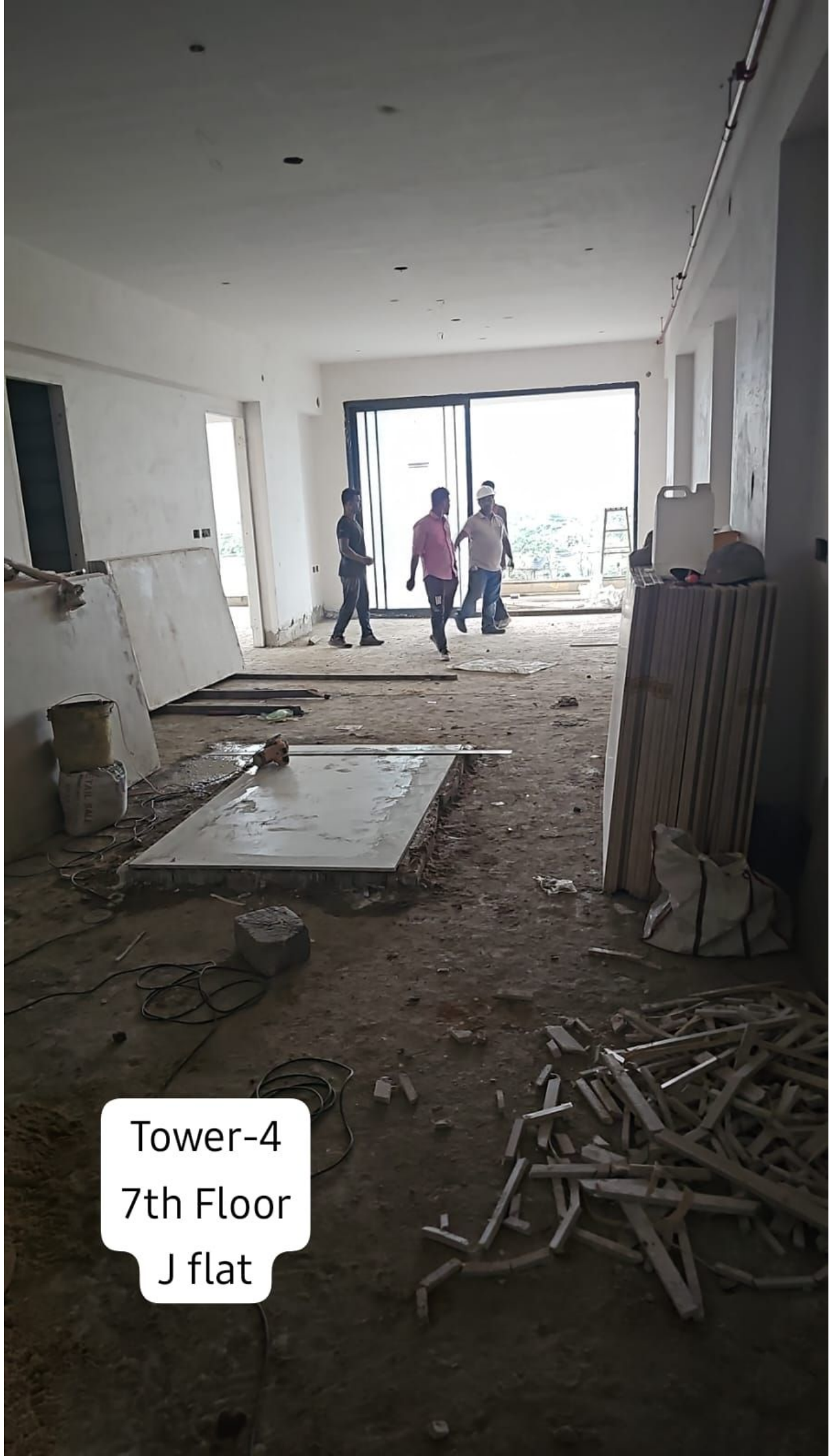
Tower-4
9th Floor
K flat



Tower-4
7th Floor
K flat



Tower-4
6th Floor
J flat



Tower-4
7th Floor
J flat



Block-4
Floor -5
Open area





Tower-4
6th Floor
K flat

A photograph of a concrete structure on the third floor of a building. The structure consists of several rectangular concrete walls and pillars. In the background, there are trees and other buildings. A white text box with black text is overlaid on the image.

Block-4
Floor -3



Block-4
Floor -4 open area



Boock-4
Floor-2



Block-4
Floor -1

The image shows the interior of a large, empty concrete structure, likely a basement or underground parking area. The floor is made of rough, grey concrete with visible tire tracks. In the foreground, there is a large, dark, irregularly shaped puddle of liquid. The ceiling and walls are also made of concrete, with several large, square concrete pillars supporting the structure. In the background, there are some wooden scaffolding or construction elements. On the right side, there is an opening that looks like a window or a doorway, showing some greenery outside. The overall lighting is dim, with some light coming from the opening on the right.

Block-4
Floor -3



Tower-4